

# NozzTeq<sup>®</sup>

**TAKING SCIENCE TO THE SEWER<sup>®</sup>**



**WHEREVER YOU ARE  
AND WHATEVER PROJECT!**



NozzTeq®

TAKING SCIENCE TO THE SEWER®

# HIGH END C

## BL SWIPER®

Max cleaning power at low operating costs

**BL SWIPER®** is a series of nozzles, developed for cleaning sewers and storm water pipes in a cost-effective and resource saving manner.

The construction of the **BL SWIPER®** is designed to maximize the cleaning of the system by using the water from the jetting unit which pass through the patented Tier 3 stainless steel loop system and air flow through the installed air channels. This reduces the pressure in the line and reduces the possibility of blowing toilets. The material design on the nozzle will prevent damage to the host pipe especially on PVC and lined pipe systems.

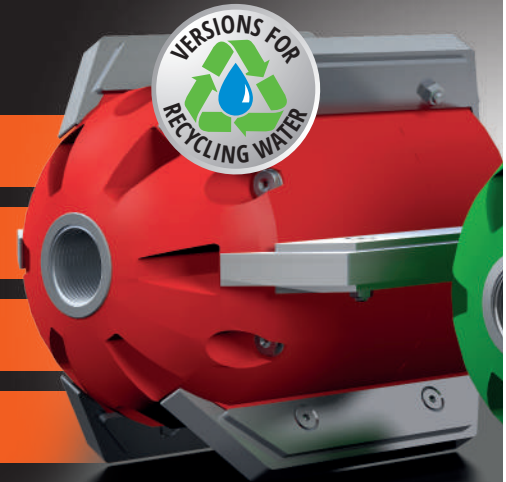
**BL SWIPER®** is gentle to pipe and also works effectively under water.

Perfect adaption to every project

Extreme power even under water

Saves time, fuel, water and wear

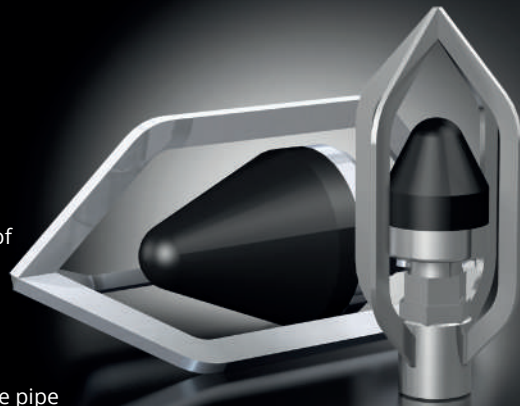
Low service and life time costs



## JAWS®

In the **JAWS®** series of cleaning nozzle the water is looped around a system of conduits for maximum pulling and cleaning power, wear resistance and safety.

That means your crews will clean more pipe with fewer passes, generating less wear and tear on pipes and trucks, using less fuel and water.



Unique design and long service lifetime

## C-RAY® & MANTA

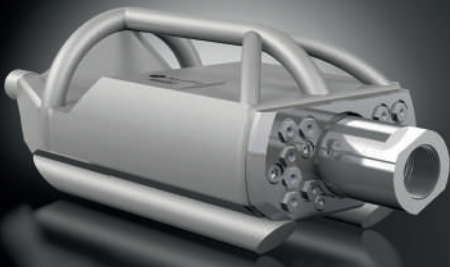
**C-RAY®** and **MANTA®** are made for sewer or storm cleaning where debris is at the bottom of the pipe. The internal flow design gives optimum pulling and cleaning power.

**MANTA®** is designed for both conventional and recycle truck. Number of jets can easily be altered for a perfect match to pipe size and pump capacity.

# CLEANING NOZZLES



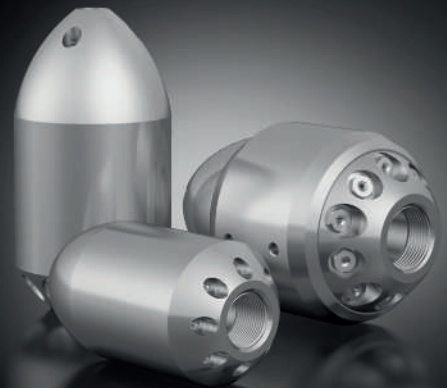
## ANTA<sup>®</sup>



Optimum pulling  
and cleaning power

## GOBLIN<sup>®</sup>

**GOBLIN<sup>®</sup>** is the original Laminar Flow cleaning nozzle developed already in 1984 by NozzTeq<sup>®</sup>. High-Quality stainless-steel construction with optional sleeve for larger models. The perfect choice for general pipe or drainage cleaning. Available with different jet angles with one or four front jets.



Compact flow and wear resistant design



TAKING SCIENCE TO THE SEWER®

# LUMBERJACK®

## THE ORIGINAL



**LUMBERJACK® - The original low-torque, high-speed cutter (up to 50 000 rpm) that have serviced the industry for more than 30 years.**

- Cuts roots, light concrete, grease, mineral deposits, tuberculation, protruding laterals, chemical buildups, and much more.
- Because it's low-torque, it's unlikely to get stuck, spin off the hose or cut through the host pipe.
- No after use service and rarely replacement of the water-cooled bearings.
- Available in different models for optimal cleaning effect offering the best solution for your needs.
- **LUMBERJACK®** series of cutters cover pipe sizes from 3" up to 48".
- Best long-term investment with average service lifetime of 7-15 years, and sometimes even longer.

# STANDARD NOZZLES

With more than 40 years in the industry, we offer knowledge, training and a comprehensive program of cleaning nozzles to help you solve the toughest assignments. Our cleaning nozzle program offer a wide range of products to solve most project in pipe, with long service life, time and energy efficiency.

## FIR® POINTED - The master of blocked pipes

FIR® POINTED is due to its soft shape and the possibility of up to (4) front jets, a very efficient tool for removing obstacles in pipe. With thrusting jets in a two-level construction, the nozzle effectively works its way through a blockage. Can be used on both conventional and recycle trucks by installing ceramic inserts.



## GLOBAL™ - The number one of standard cleaning nozzles

GLOBAL™ and MULTI-GLOBAL® are our line of trouble solving every day nozzles. Short and effective flowdesign with good thrusting and debris moving power. Designed with the rounded edges, which reduces the chance of becoming hung inside the pipe. Can be used on both conventional and recycle trucks by installing ceramic inserts.

GLOBAL™ SP has substantial weight and sits low on the bottom of the pipe. Minimizes risk of nozzle turning in pipe and allows to successfully navigate over small voids, off-sets, drop joints etc. in the pipe.



## GOBLIN® GRENADE - Maneuverability in pipe

GOBLIN® GRENADE is engineered for optimum maneuverability and to prevent nozzles from getting stuck. Improved internal flow design give a more efficient cleaning. Can be supplied with front jet.



## CHISEL NOZZLE

NozzTeq® CHISEL NOZZLES is the perfect all-purpose nozzle to break open clogs and remove general debris including grease and light roots. The front of the nozzle is supplied with sharpened edges that will, together with the four front jets, help cut through grease, ice and roots and handle blockages of many types.



## BL SPINNER® - The 360° cleaning nozzle

BL SPINNER® series of high quality, fast rotating nozzles are developed for effective removal of grease, smoother deposits, smaller roots etc. in pipe. The rotating body is reversible allowing 45° to shoot forward. With 4 jets at 90° this allows you to clean the pipe thoroughly.

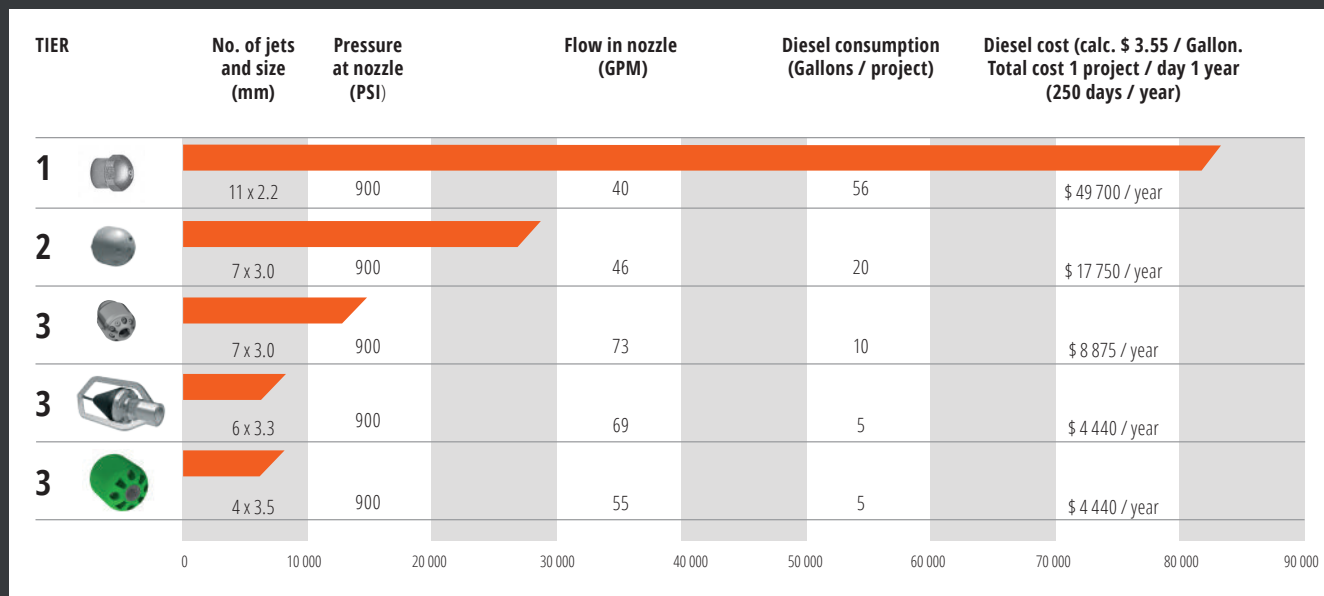


# OPTIMIZE YOUR INVESTMENT

The chart below is the result from a live test performed in Sweden, where a 9" pipe built above ground, length 265 ft., was filled with 880 lbs sand, gravel and stones.

Different nozzles were used to clean the pipe completely under the same conditions (same pressure in nozzle, same load of debris in pipe etc.).

The chart shows time needed for each nozzle to clean the pipe completely as well as total water and diesel consumption.



### TIER 3:

Tier 3 nozzles are designed to maximize the efficiency of water flow. Flow dynamics are designed to significantly increase the water pressure exiting the jets. Their only downside is the fact that they can be more costly. However, the cost is usually offset by increased efficiency. Tier 3 nozzles have the highest rating for water efficiency between 75-98% efficient. The high-end Tier 3 nozzles (often patented) have an advanced water conductive design inside and an efficiency rating between 90-98%. This saves time, water, and diesel consumption. Even though these nozzles are more expensive the cost of the nozzle is paid for in the savings from use of less fuel, less water, and the decrease in amount of manhours needed to complete the project. NASSCO awarded the Jaws<sup>®</sup> nozzle a 97% efficiency rating.

### TIER 2:

Tier 2 nozzles are more expensive than Tier 1 nozzles but have better flow dynamics than Tier 1 nozzles due to replaceable jet inserts that straighten the jet streams as they exit the nozzle.

Tier 2 nozzles have no internal water directing design, compared with Tier 3 nozzles. When the jet orifices wear out, these nozzles can normally be restored to their full operating capacity by replacing the jet inserts. The water efficiency rating for Tier 2 Nozzles is 50-70% efficient.

### TIER 1:

Tier 1 nozzles have orifices drilled out in different locations and sizes and at different angles, which can mean inefficient flow dynamics and less performance. When the water enters the nozzle, it hits into the back of its interior, then bounces out in the opposite direction while exiting through the drilled holes. During this process, a considerable amount of energy is lost due to increased turbulence that is created inside the nozzle. Over time, the drilled jet holes wear out and the nozzle becomes ineffective. These nozzles are rated for water efficiency of approximately 40-60% efficient.

# CLEANING ACCESSORIES

NozzTeq® offers a wide range of accessories for pipe cleaning with proven products for professional use.

## Accessories for cleaning nozzles

- Wide range of jets with M4 threads up to ¼" made in different materials to enable us to supply the best solution in each individual case.
- Nozzle adaptors designed not to interfere with jet stream from nozzle.
- Schedule 80 extender pipes to prevent nozzles from turning in the pipe or from entering the laterals.
- Wide range of centralizing sleds.
- Nozzle holders in stainless steel to minimize risk of losing nozzles.



## Other accessories

- We have a large assortment of professional and durable hose protecting tools used on top as well as down in manhole.
- Stone scoops for material handling in manhole.
- Ejectors to increase suction height and volume.



# NozzTeq® – A problem solver and system supplier

The mother company of NozzTeq® was founded in the mid-1960s as a consulting firm in the water and sewage industry. As a result, NozzTeq® purchased one of Sweden's first jetting vehicles. The equipment of that time had major deficiencies in terms of functionality and working environment. We rebuilt existing equipment but also designed new, to make our work easier and more efficient.

Throughout the years NozzTeq® has created several new products, some so unique that they have been patented.

Come to us with your problem and we will develop a tailor-made solution that will perform with highest efficiency and lowest energy consumption. We develop everything from special cleaning nozzles to larger system solutions.

## Together we create new possibilities!

Distributor:



**TAKING SCIENCE TO THE SEWER**

NozzTeq, Inc.  
2901 Peoria St. Suite 3  
Peru, IL 61354

779-201-5130 Office  
[www.nozztequsa.com](http://www.nozztequsa.com)  
[info@nozztequsa.com](mailto:info@nozztequsa.com)